

# & Piano Music Festival 2026

25<sup>th</sup> April -  
2<sup>nd</sup> May

Slaithwaite, Huddersfield

Discover More Music  
[www.andpiano.co.uk](http://www.andpiano.co.uk)



Supported using public funding by  
**ARTS COUNCIL  
ENGLAND**

# Welcome to &Piano 2026



I'm delighted to welcome everyone to another year of &Piano - one of the UK's freshest, and most excitingly different Classical music festivals - in the beautiful Colne Valley in Huddersfield, West Yorkshire.

Once again we have an amazing line-up of exceptional, exciting, and internationally renowned musicians - filling the valley with incredible music & amazing performances.

This year we're looking at 'Connections & Crossovers' over the festival. &Piano is a festival that showcases music with piano accompaniment - that usually means singers, a solo instrument, or a group of instruments, accompanied by piano. We typically programme instruments & singers in separate concerts, but this year we thought we'd try something a bit different and combine the two together - to encourage those that might prefer instrumental music more, to give vocal music a try, and vice-versa. And for anybody that isn't familiar with either - it's an opportunity to experience both in one performance!

Inspired by this festival's closing concert 'To the East', which features two brilliant musicians, Soprano Katherine Broderick & Flautist Imogen Davey, together they'll perform 'The Enchanted Flute', from French composer Maurice Ravel's atmospheric and intoxicating Middle-Eastern inspired song cycle 'Sheherazade'.

We start this event much closer to home however, with a very exciting piece of music by the renowned British contemporary composer Cheryl Frances-Hoad - a collection of songs about our very own Colne Valley! Setting poems by local poet Adam Strickson, each poem is about a different specific location - there's even a direct reference to Scapegoat Hill! It's not often we find songs written about our small rural area in West Yorkshire, especially by such an acclaimed composer, and I'm delighted that we have the opportunity to perform it in the very place it's about!

It's not too often you get solo instruments and singers together in one concert, but I think the result is a really powerful and interesting spin on narrative, story-telling and sound-world making.

I'm excited that this year we've partnered with the award-winning Concerteenies to present our Family event this year, and we'll be touring the performance around Kirklees, with a performance also in Halifax too in our effort to offer more people across our region accessible opportunities to experience & discover live classical music.

As well as our main festival events, all of our other regular events are back, from our brilliantly fun & varied Performance Pub, to our wonderful Young Musician Showcase, when we'll once again be supporting this year's cohort of Young Musicians with a series of masterclasses led by leading professional musicians.

We're also introducing a new 'Classical Café' in our first weekend. This is a further development of a close partnership with local music hub Musica Kirklees to offer their students opportunities to perform as soloists, as part of our festival. It's an opportunity for us to support the amazing work that Musica Kirklees does in our area, as well helping to support the next generation of musicians - to highlight to them that sharing their music is vital - not just for their musical development, but also for their character: to help build confidence, manage nerves, and to provide joy & entertainment to our audiences.

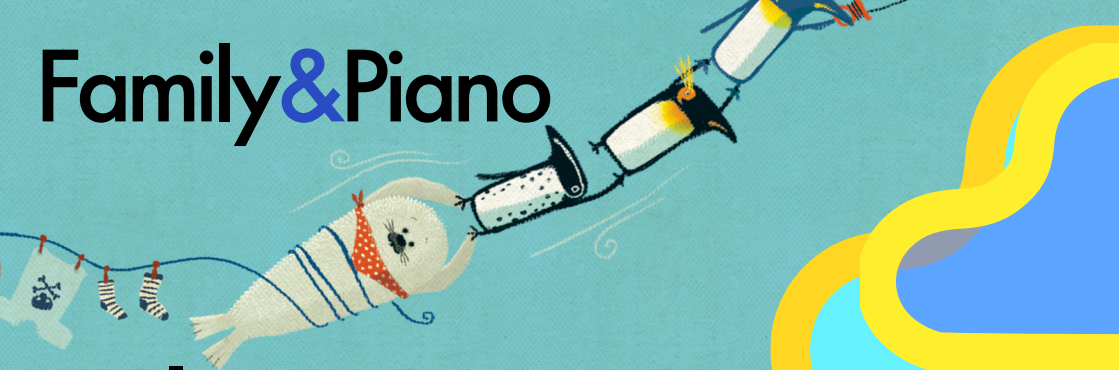
There really is an opportunity for everyone to discover something musically new in this year's festival and we hope you'll join us for one or more of our events. As usual, all of our performances will feature friendly banter and chat from our performers, guiding you through the music as we go along. I can't wait to see you there!



Chris Pulley

Christopher Pulleyn

# Family & Piano



## Blown Away

presented by

### Concerteenies



*'Penguin Blue and his friends are in for a surprise! It all starts with a windy day and a brand new kite... Come fly away with Penguin Blue as he gets caught in a gust of wind and the adventure begins.'*

Join Sarah Carroll (narrator), Kathryn Williams (flute and alto flute) and Christopher Pulleyn (piano) as they travel through the wintery antarctic to the Jungle tropics. With songs and actions to learn and join in with, and a relaxed and friendly environment, this is a perfect introduction to classical music and storytelling.

*Touring venues across Kirklees & Calderdale. Doors will open approximately 30 minutes before each performance. Performance lasts approximately 50 minutes.*

Saturday 25<sup>th</sup> April

11 am - The Civic, Slaithwaite  
2pm - Holmfirth Methodist Church

Sunday 26<sup>th</sup> April

11 am - Calderdale Music, Halifax  
2pm - The Arcade Pop-up, Dewsbury

# Saturday 25<sup>th</sup> April

## Classical Café

1-3pm

*The Civic, Slaithwaite*

New to &Piano this year is our very first Classical Café in partnership with Musica Kirklees.

Similar to our popular 'Performance Pub' - our Classical Café is a relaxed opportunity aimed at young musicians from all across the Musica Kirklees network, to have the chance to perform and share their music-making in a friendly, welcoming & encouraging environment.

Pop in and enjoy a cuppa while listening to the next generation of music makers. *(This is a Pay As You Feel event)*



# Sunday 26<sup>th</sup> April

## YMS Masterclasses

11-1pm - Instrumental Masterclass

2-4pm - Vocal Masterclass

*The Civic, Slaithwaite*



Come along and watch our Festival Masterclasses, where this year's group of &Piano Young Musicians will have the opportunity to work with a leading professional musician on their performance skills & musical technique prior to their performance in the Young Musician Showcase on Thursday.

This will be a fascinating insight into the skill and thought that goes into learning a musical instrument and performing. *(This is a free event)*

Saturday 25<sup>th</sup> April | Event 1

# A Night at the Light Opera

7:30pm | *St James' Church, Slaithwaite*

Soprano - Juliet Montgomery | Mezzo-soprano - Claire Pascoe

Tenor - Kamil Bień | Baritone - Jeremy Peaker

Our first evening event of 2026 celebrates the sparkling music of Light Opera, performed by a fantastic quartet of singers who perform with Opera North, Scottish Opera & Opera Holland Park.

Evolved out of the more serious, dramatic (and often longer!) Opera, 'Light Opera' paved the way for the development of the modern musical.

With catchy songs, memorable melodies, witty lyrics and ridiculous plot-lines, join us to celebrate, discover and enjoy some of the most iconic songs from some of Operetta's most famous shows & composers, including Johann Strauss II (The Flying Bat), Franz Léhar (The Merry Widow) and Gilbert & Sullivan (The Mikado) before arriving at the dawn of musical theatre as we know it today, with songs by Rodgers & Hammerstein (The Sound of Music), Jerome Kern (Show Boat) & Lerner & Loewe (My Fair Lady).





Sunday 26<sup>th</sup> April | Event 2

# The Last Post

Music for Voice, Trumpet & Piano

6pm | *The Civic, Slaithwaite*

Trumpet - Lewis Barton | Baritone - Andrew Randall

Piano - Sid Ramchander

**Featuring:**

*A Shropshire Lad* - George Butterworth

*Légende for Trumpet* - Georges Enescu

This year we're showcasing the trumpet, and with its close association to the military, this evening three exciting performers will present a powerful programme of music exploring the tragedy and impact of war, with music written about or around World War 1 & 2.

It's around this time that the trumpet was starting to gain credibility as a solo instrument in its own right, and we present one of the most lyrical and dramatic pieces ever written for the instrument - *Légende*, written by Romanian composer George Enescu.

Alongside this, baritone Andrew Randall will perform one of the most quintessential English Song Cycles ever written - '*A Shropshire Lad*' which reflects on the lives of young soldiers lost to war. The composer George Butterworth died 5 years after writing it, killed in action in WW1.

# Tuesday 28<sup>th</sup> April

## Performance Pub

7:30-9:30pm

*Attic Theatre, The LBT, Huddersfield*

Performance Pub returns for another fantastic variety of music!

Classical singers & instrumentalists of all abilities, backgrounds and experiences are invited to perform a piece or two - or three! And anyone who requires piano accompaniment will have Artistic Director Chris Pulleyn on hand to play for them!

Sign up to perform by scanning the QR code below or emailing [jenny@andpiano.co.uk](mailto:jenny@andpiano.co.uk), or buy an audience ticket to listen, support & enjoy an fantastic evening of music-making & community.



# Thursday 30<sup>th</sup> April

## Young Musician Showcase

7:30-9:30pm

*St James' Church, Slaithwaite*

Join us for our annual concert celebrating & showcasing some of the most talented young performers from across Kirklees & Calderdale.

Featuring an equal mix of singers and instrumentalists, many of our previous performers have gone on to study music further at some of the top music colleges across the country. Join us to discover the next generation of top performers from across the region.

Friday 1<sup>st</sup> May | Event 3

# ((LISTEN))

Classical Night @  DARK WOODS  
COFFEE

7:30pm | Dark Woods Coffee, Marsden

## Duo Cantelina

Sophie Clarke (Mezzo Soprano) | Ravi Nathwani (Guitar)

((LISTEN)) returns for another Classical concert with a twist. This year, we're ditching the piano for another instrument that's more often seen as a pop, rock or folk instrument than a classical one - the guitar.

We've invited celebrated classical guitar and vocal duo Sophie Clarke & Ravi Nathwani to give us an intimate & eclectic evening of songs arranged for guitar & voice from as far back as the 16<sup>th</sup> Century to the present day.

From beautiful lute songs by John Dowland to dramatic Spanish opera (known as Zarzuela), from Bossa Nova to the Beatles & everything in between, this will be the perfect cosy vibe to round off the end of the week.



# Saturday 2nd May



## Composition & Improvisation workshop

1-2:30pm | *The Civic, Slaithwaite*

In anticipation of the evening's premiere performance of our festival commission, flautist & composer Imogen Davey leads a workshop that anyone can take part in, exploring how to compose and create music, exploring improvisation and sound-art.

Anyone can take part, whether you consider yourself a musician, singer or none of the above!

*(This is a free event - sign up is essential as spaces are limited)*

## Small Journeys - guided walk

3-4:30pm | Meet at  
*Titanic Mill Entrance, Linthwaite*

Join local poet Adam Strickson for a guided walk around some of the locations around the Colne Valley that inspired the poetry he wrote for the song cycle 'Small Journeys' - which will be performed by Soprano Katherine Broderick & pianist Christopher Pulleyn in the evening - set to music by celebrated composer Cheryl Frances-Hoad.

*(This is a free event. The walk is appropriate for all abilities, on a largely low-level route, with stops to hear some of Adam's poetry)*

Saturday 2<sup>nd</sup> May | Event 4

# To the East

Music for Voice, Flute & Piano

7:30pm | *The Civic, Slaithwaite*

Soprano - *Katherine Broderick* | Flute - *Imogen Davey*

Classical Indian Dancer - *Sanchita Mazumdar*

Poet - *Adam Strickson* | Piano - *Christopher Pulleyn*

## Featuring:

*Maurice Ravel - Sheherazade* | *Cheryl Frances-Hoad - Small Journeys*

*Robert Muzcynski - Flute Sonata* | *Otar Taktakishvili - Flute Sonata*

*Imogen Davey - New piece for Voice, Flute & Piano*

*(&Piano Commission, World Premiere)*

We finish this year's festival with a magical evening jam-packed with music, poetry & dance.

This evening is all about heading Eastwards - beginning with a special performance of '*Small Journeys*' by acclaimed composer Cheryl Frances-Hoad - a collection of songs setting texts by local poet Adam Strickland about specific locations in the Colne Valley.

We continue towards Eastern Europe, showcasing two very distinct and different sound-worlds of the flute, before reaching the lands of Persia and India with a performance of Maurice Ravel's incredible song cycle '*Sheherazade*'.

Adam will also perform a poem inspired by the Slawit SHOP! celebrations, along with Indian Classical Dancer Sanchita Mazumdar, who will also join our musicians in their performance of '*Sheherazade*'.

Be sure not to miss this fantastic finale to &Piano 2026!



*I absolutely loved it. One of my best gig experiences. Loved the intimacy, loved the venue, loved the programme and loved the exceptional performance.*

*&Piano 2025 Audience Feedback*

# &Piano School Tour

As part of our work to promote & encourage the continued appreciation of classical music, &Piano has established an annual schools recital tour, giving classical music performances to secondary schools around Kirklees & Calderdale, where students have the opportunity to experience and interact first-hand with professional classical musicians performing a wide range of music from JS Bach to John Williams.

Now in it's fifth year, we perform annually to around 1200 students from Colne Valley to Sowerby Bridge. The feedback and engagement we have from students is always amazing - they listen intently to songs performed in foreign languages, ask questions about the music, about the profession and the industry.

Thanks to support from Arts Council England & the Sir George Martin Trust, this year we'll be giving performances across schools between 30<sup>th</sup> June to 3<sup>rd</sup> July, introducing students to a broad range of classical music, which we encourage them to explore and listen alongside their other musical interests.

If you'd like to know more information about our schools recital tour, or if you're a secondary school teacher in Kirklees or Calderdale & would like to enquire about a visit to your school, email [info@andpiano.co.uk](mailto:info@andpiano.co.uk)





# Support Us

&Piano is a small charity run by a small group of volunteers and trustees, working to support & develop the rich musical heritage of Kirklees & Calderdale, showcasing talented musicians based around the area, and encouraging people to come together to listen to and discover classical music.

Help support more of the work we do by becoming an 88 Keys Supporter, to pledge an annual donation of your choice from just £10/year. Your support can allow us to continue delivering our annual programme of work, including our family events and our Young Musician programme, as well as continuing to invite some of the finest & most exciting musicians from across the UK to West Yorkshire.



You can sign up to our *88 Friends Scheme* or make a donation by visiting: [www.andpiano.co.uk/support-us](http://www.andpiano.co.uk/support-us) or emailing [friends@andpiano.co.uk](mailto:friends@andpiano.co.uk).

If you are a business who would like to support us, email [info@andpiano.co.uk](mailto:info@andpiano.co.uk) to find out about our Business Sponsorship Packages. Your help can make a huge difference!

# 2026 Festival Tickets

Planning to attend more than one event? It's cheaper to buy a multi-event ticket, and the discount per event is bigger the more events you attend.

You can also buy a Festival Ticket which will give you admission to all events including our Performance Pub & Young Musician Showcase.  
(Multi-event tickets are only available in advance online)

One Event Ticket	£15
Two Event Ticket	£27
Three Event Ticket	£36
Four Event Ticket	£45
Festival Ticket (incl Performance Pub & Young Musician Showcase)	£60
Family&Piano	£10 (1 Adult & 1 Child)
	£7 (Additional adult/ additional child)
Performance Pub	£7
Young Musician Showcase	£7
Under 30/Student/ Kirklees Passport Ticket	£5

Visit [www.andpiano.co.uk/whats-on](http://www.andpiano.co.uk/whats-on) or scan the QR code for further details on tickets and how to buy them.



# &Piano 2026 Music Festival

## **Saturday 25 April**

Family Event - Blown Away	11am & 2pm	Slaithwaite & Holmfirth
Classical Café	1pm	The Civic, Slaithwaite
A Night at the Light Opera	7:30pm	St James' Church Slaithwaite

## **Sunday 26 April**

Family Event - Blown Away	11am & 2pm	Halifax & Dewsbury
YMS Instrumental Masterclass	11am	The Civic, Slaithwaite
YMS Singers Masterclass	2pm	The Civic, Slaithwaite
The Last Post Music for Voice, Trumpet & Piano	6pm	The Civic, Slaithwaite

## **Tuesday 28 April**

Performance Pub	7:30pm	Attic Theatre, The LBT
-----------------	--------	------------------------

## **Thursday 30 April**

Young Musician Showcase	7:30pm	St James' Church, Slaithwaite
-------------------------	--------	----------------------------------

## **Friday 1 May**

((LISTEN)) Classical Night	7:30pm	Dark Woods Coffee, Marsden
----------------------------	--------	-------------------------------

## **Saturday 2 May**

Composition & Improvisation Workshop	1pm	The Civic, Slaithwaite
'Small Journeys' Guided walk & poetry	3pm	Titanic Mill Entrance, Linthwaite
To the East Music for Voice, Flute & Piano	7:30pm	The Civic, Slaithwaite

Follow | message | tag us | say hello on



/andpianofest